
Comfort-Aire®

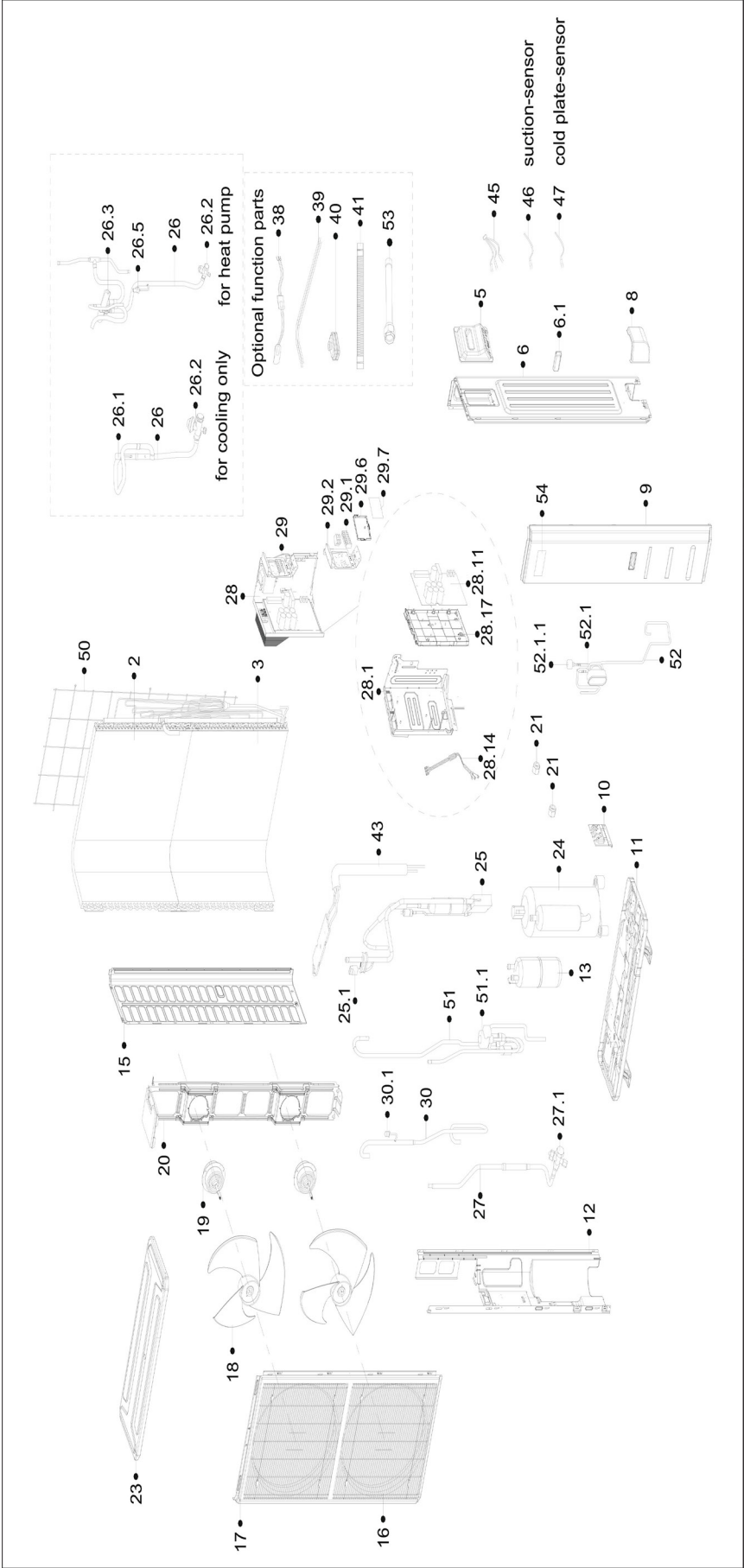
Century®

REPLACEMENT PARTS LIST

**Hyper Heat Single Zone Air Handler &
Condenser**

A-VXP60SA-1

EXPLODED VIEW



REPLACEMENT PARTS

Location	Part Name	Quantity	Part No.
2	Condenser assembly	1.0	15822000015872
3	Condenser assembly	1.0	15822000015870
5	Handle assembly	1.0	12222000018396
6	rear right side plate assembly	1.0	12222000019916
6.1	Handle	1.0	12100702000038
8	Water collector	1.0	12122000014023
9	Front clapboard assembly	1.0	12222000020285
10	Valve plate	1.0	1222200002361
11	Fixing plate on chassis	1.0	12222000013910
12	Partition board subassembly	1.0	12222000019388
13	accumulator cylinder	1.0	15500508001475
15	Left supporter	1.0	1222200002363
16	Air outlet grille	1.0	12222000014845
17	Front panel	1.0	12222000007564
18	axial flow fan	1.0	12100105001361
19	Outdoor fan motor	1.0	11002015009825
20	Motor bracket assembly	1.0	12222000016092
21	Copper nut	1.0	15500406000010
21	Copper nut	1.0	15500406000008
23	Top cover assembly	1.0	12222000008695
24	compressor	1.0	11103020014679
25	compressor discharge pipe subassembly	1.0	15122000034793
25.1	Pressure switch	1.0	17400516000851
26	4-ways valve or Gas valve assembly	1.0	15422000026676
26.2	Gas valve	1.0	15500204000662
26.3	4-way valve	1.0	15500216002623
26.5	pressure sensor	1.0	11201008001132
27	High pressure valve subassembly	1.0	15422000027315
27.1	High pressure valve	1.0	15500204000665
28	Electronic control box subassembly	1.0	17222000044158
28.1	Electrical installation plate assembly	1.0	12222000019387
28.11	Outdoor main control board subassembly	1.0	17122000064097
28.14	compressor connection cable	1.0	17401203022090
28.17	Electronic installing box	1.0	12122000032939
29	Electronic control box terminal board assembly	1.0	17222000044159
29.1	Terminal block	1.0	17400401006516
29.2	Terminal board assembly	1.0	12222000019625
29.6	Electronic installing box	1.0	12122000035062
29.7	Data Conversion Module Subassembly(□24V)	1.0	17122000064070
30	compressor suction pipe subassembly	1.0	15122000034342
30.1	Pressure switch	1.0	17400516000009
38	compressor electric heater	1.0	17402001000979
39	Electric heater of chassis	1.0	17402002000466
43	Radiator	1.0	15122000035682
45	combination sensor	1.0	11201011001207
46	Outdoor pipe temperature sensor	1.0	11201007000136
47	Outdoor pipe temperature sensor	1.0	11201007003445
50	Rear Grille	1.0	12222000007944
51	Electronic expansion valve subassembly	1.0	15422000026897
51.1	Electronic expansion valve	1.0	15500213002290
52	heat exchanger assembly	1.0	15700101002256
52.1	Electronic expansion valve subassembly	1.0	15422000022915
52.1.1	Electronic expansion valve	1.0	15500213000865
53	evaporator connecting pipe subassembly	1.0	15123000012948
53	evaporator connecting pipe subassembly	1.0	15123000012887
54	Outdoor unit trademark	1.0	16000201001228

Due to ongoing product improvements, specifications and dimensions are subject to change and correction without notice or incurring obligations. Determining the application and suitability for use of any product is the responsibility of the installer. Additionally, the installer is responsible for verifying dimensional data on the actual product prior to beginning any installation preparations.

Incentive and rebate programs have precise requirements as to product performance and certification. All products meet applicable regulations in effect on date of manufacture; however, certifications are not necessarily granted for the life of a product. Therefore, it is the responsibility of the applicant to determine whether a specific model qualifies for these incentive/rebate programs.

Comfort-Cire®  **Century**®

1900 Wellworth Avenue • Jackson, MI 49203 • 517-787-2100